



SofSource Int.
Technical Consultancy Services

Cost-effective Solutions for the Energy Industry

About Us

SOF SOURCE International Limited was founded by seasoned professionals within the energy industry with a singular mission: to deliver pioneering, secure, efficient, and expeditious tailored solutions to the global energy sector. Our adept team seamlessly integrates expertise in Subsurface Management, Topsides Facilities, Asset Integrity Management, Marine Operations, and streamlined Procurement and Logistics administration, ensuring flawless project execution.

We specialize in providing bespoke engineering management services, including cutting-edge technologies such as Distributed Fibre Optic Sensing for precise leak detection, Optical Gas Imaging services for Fugitive Emission Leak Detection and Repair (LDAR), and GHG Emission Measurement/Quantification for the acquisition of Carbon Credits.

SOF SOURCE International Limited has firmly established itself as a leading provider of energy sustainability services, renowned for our unwavering commitment to quality, safety, and operational excellence, we have earned a reputation for delivering flawless solutions.

Our Vision

To emerge as a premier company offering cutting-edge energy sustainability and sensing technology services and becoming the preferred choice in the industry.

Our Mission

To excel as a world-class Energy Servicing company by integrating sensing technology for subsurface and asset integrity management, while strategically balancing risk and opportunity for sustainable solutions.

Our Services

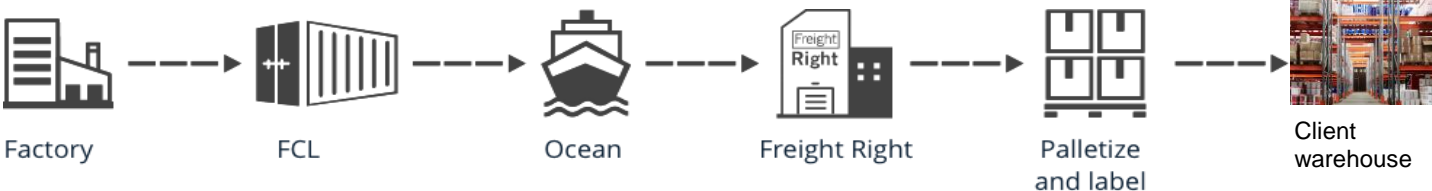
1 Engineering, Procurement, Construction, Installation and Commissioning (EPCIC)

Our company specializes in providing comprehensive & exceptional Engineering, Procurement, Construction, Installation, and Commissioning (EPCIC) services to our valued clients. With a focus on integration and efficiency, we assist our clients in successfully executing major offshore and onshore oil and gas development projects. From the initial conceptual studies to the detailed Front End Engineering Design (FEED) phase, through contracting, procurement, construction, installation, commissioning, and start-up, we offer a seamless and thorough approach to project management. Our team of experienced professionals ensures that every aspect of the project is meticulously planned and executed to meet the highest industry standards. At our core, we prioritize safety, quality, and environmental stewardship. We are committed to achieving project objectives below budget, ahead of schedule, and without compromising the safety of personnel, equipment, or the environment. Our track record speaks for itself, as we consistently deliver results that exceed expectations while maintaining the utmost integrity and responsibility.

We are strategically positioned as a Global Buying House, thereby procuring and delivering the required materials and equipment to enable our clients deliver their projects and operations in a safe, timely and cost-effective manner, including:

- Compressors and Turbines
- Power Generators
- Separators and Filters
- Heat Exchangers
- Pressure Vessels & Boilers
- Pipes and Tubular Products
- Instrumentation and Controls Units
- Handling accessories
- Pipe Fittings and Flanges
- Valves & Actuators
- Pumps, Parts and Accessories
- Drilling Equipment
- Drilling Chemicals and Mud
- Hoses and Fluid
- HVAC Equipment and Supplies

Our commitment to delivering excellent procurement supply chain logistics services is unwavering, and we continually strive to exceed our clients' expectations.



2

Specialised Asset Integrity and Thermal Insulation Services

At SOF SOURCE International Limited, we specialize in providing top-tier Thermal Insulation Services aimed at reducing heat transfer between objects within the thermal environment or within the range of radiative influence. Our approach involves employing specially engineered methods and processes, as well as utilizing appropriate object shapes and materials to achieve optimal thermal insulation. Our Thermal Insulation Services are designed to meet the diverse needs of our clients across various industries. Whether it's insulating pipelines, vessels, equipment, or structures, we have the expertise and resources to deliver effective solutions that enhance energy efficiency and operational performance. At SOF SOURCE International Limited, we take pride in delivering comprehensive Asset Integrity Services designed to ensure the reliability, safety, and efficiency of our clients' assets. Central to our approach is the provision of a standardized Computerized Maintenance Management System (CMMS) data set tailored to meet the unique requirements and operational needs of our clients. Our CMMS data set is meticulously customized to align with your specific business processes and operational workflows. This customization enables a streamlined and transparent process for equipment maintenance, repair, and spare parts management, all driven by a thorough assessment of risk which include a robust equipment criticality selection process, which enables clients to effectively manage risk and allocate resources where they are most needed. By identifying critical assets and prioritizing maintenance activities accordingly, we help minimize downtime, enhance safety, and prolong asset lifespan.

Our Asset Integrity Mgt suite of solutions offers the following to our clients:

- CMMS/EAM Selection
- CMMS/EAM System Migration Strategies
- Asset and Maintenance Reference Plans
- Maintenance Philosophy Development
- CMMS Data Blueprint
- Maintenance Strategy Creation
- Repair and Sparring
- Standards and Procedures
- Operational Readiness Support
- CMMS Data Analyst Manpower
- Philosophy/Decision Criteria Creation
- Data Governance
- Corrective and Preventive Maintenance Prioritisation Strategy Development
- Equipment Criticality Assessment Process Development
- Work Management
- Maintenance Consultant Strategic Advice
- RAM Analysis
- Training of personnel



3 Distributed Fibre Optic Sensing (DFOS) Services

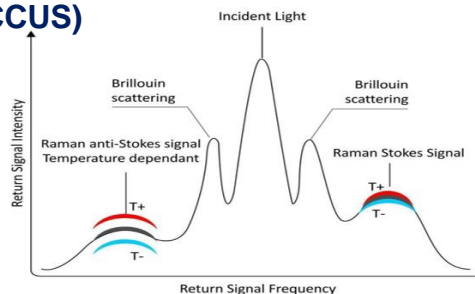
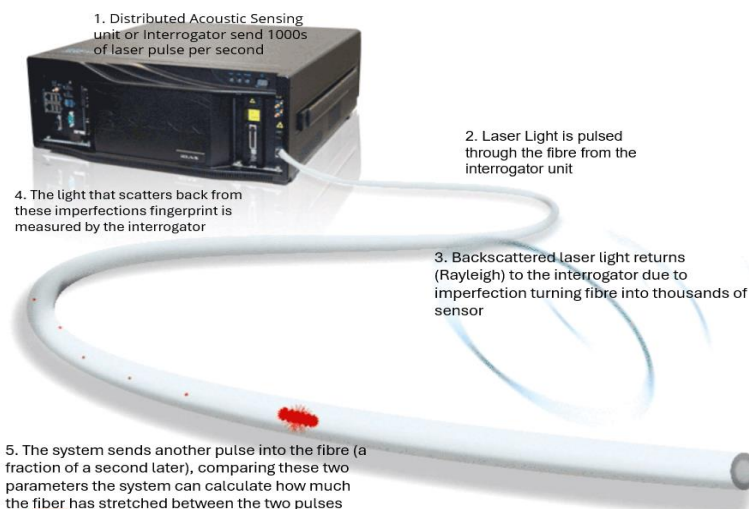
In the realm of industrial instrumentation, Fiber Optic Sensing represents a groundbreaking service for real-time measurements along sprawling assets such as well-casing\ tubing, pipelines, facilities, and power cables. It features the unique distinction of being the sole system in the market that incorporates a single interrogator capable of measuring Distributed Temperature Sensing (DTS) and Distributed Acoustic Sensing (DAS), all within a single, compact solution from Sofsource. The asset of this unified approach is that it enables simultaneous measurements of temperature and acoustics, all processed in real-time by a single unit. This translates to superior pattern recognition, expediting event acquisition and validation such as never before.

Our DFOS System is your comprehensive, plant and site-wide solution for detecting potential down failures on your facilities. Helps you to gain the advantage of early warnings, empowering your operators to mitigate downtime and steer clear of costly, unforeseen shutdowns

Our groundbreaking Fibre Optic Logging and Imaging system leverages cutting-edge fibre-optic technology to capture distributed temperature and acoustic data, providing real-time well profiling along the entire length of your well. This wealth of data offers unparalleled insights into changing conditions, irregularities, anomalies, and critical events, enhancing a wide range of applications.

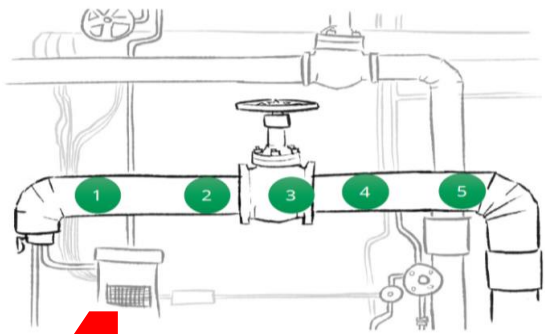
Application

- Detect leaks on Vertical and Horizontal oil well casing\ tubing
- Detect leaks on surface pipes for GHG Fugitive Emissions
- Facility Monitoring
- Perimeters fences
- Roads, Railways, Tunnels and Bridges
- Power Cables
- Carbon Capture Utilization and sequestration (CCUS)
- Well Abandonment



- Fibre Optic Cable
- Laser Pulses
- Interrogator Unit
- Backscattered Light
- Temperature Profile

•DTS measures temperature changes along the fibre
•DAS detects acoustic signals or vibrations



4 Valves Internal Leak Sensing, Calibrations and Repairs

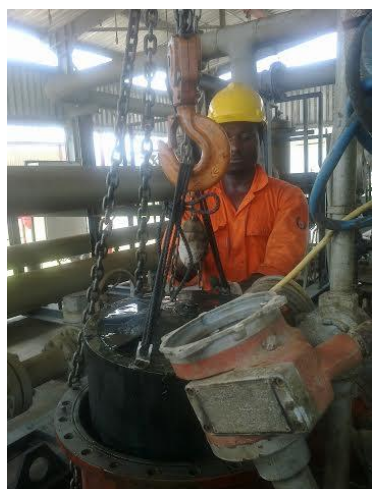
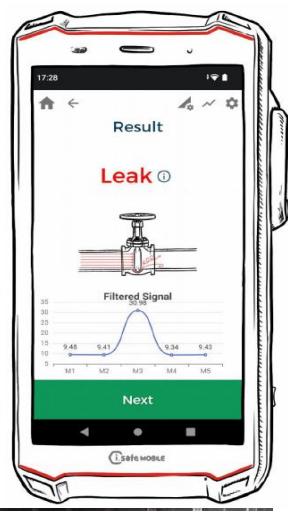
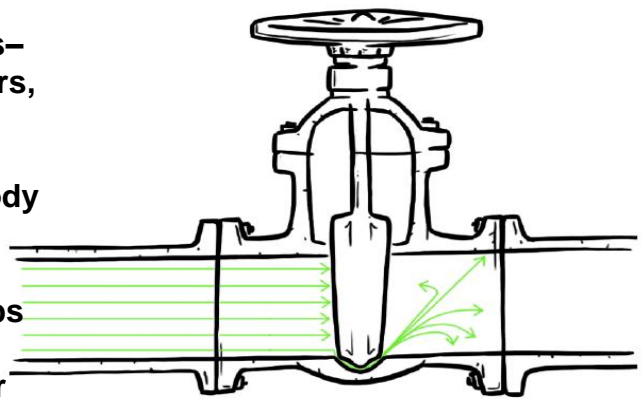
Leaking valves create turbulent flows that lead to high acoustic emissions our state-of-the-art acoustic emission sensors detect the smallest defects where common sensors don't stand a chance. Our technology helps to mitigate Losses and additional costs, unnecessary valve replacement, downtime, risk of injury, contamination and potential environmental pollution. Accurate measurement and monitoring is very important in the hydrocarbon industry especially at custody transfer points where errors of as low as 0.05% results in huge financial losses. Our metering systems are suitable for single and multiphase flow; intrusive and non-intrusive to meet all your application needs in every situation. With our in-house experience; local and foreign affiliations, we have the capacity to choose and maintain the right metering system for you to optimize your production. Currently, we have one of the best flare measurement systems (Sage metering system) in the market today that has changed the game in flare measurement and surpasses other known flare technologies like the Ultrasonic technology.

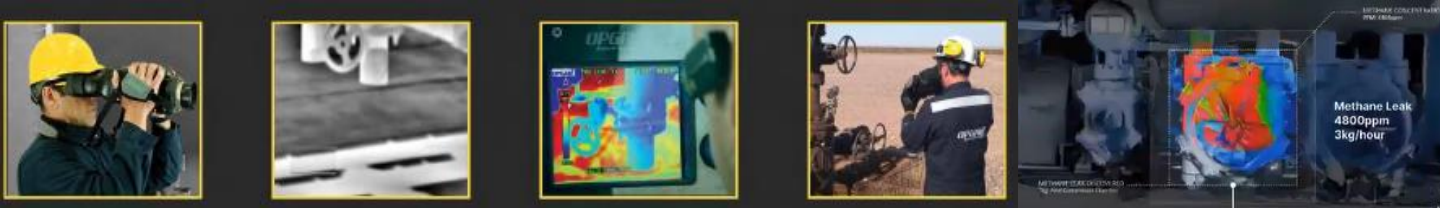
Instrument Calibration Services— Valves, Pumps, Skids, Recorders, Flow Computers etc

Metering/Metering Skids, Custody Transfer Skids

Valves, Meters, Strainers, Pumps

Remote Monitoring Systems for Wellheads, Plants, Terminals etc

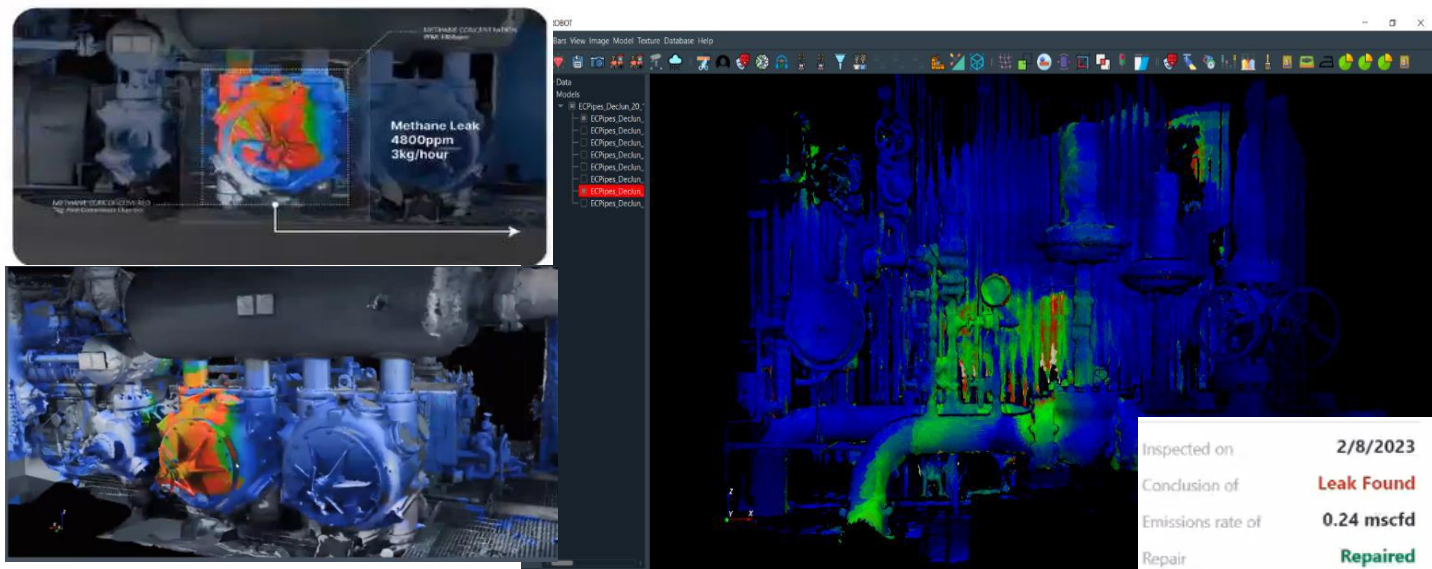




5 Fugitive Emission Leak Detection, and Repair (LDAR) Services

In the dynamic landscape of industrial operations, minimising environmental impact is a paramount concern. Fugitive emissions, often arising from leaks in industrial equipment, pose a significant challenge to sustainability efforts. Our Fugitive Emission Leak Detection and Repair (LDAR) services are tailored to address this critical environmental concern. Our state-of-the-art technologies enable precise identification of fugitive emissions across industrial facilities, from volatile organic compounds (VOCs) to hazardous air pollutants (HAPs). We leverage cutting-edge technologies such as infrared cameras, gas analysers, and optical gas imaging to provide clients with accurate, real-time data to facilitate prompt decision-making and emission control.

Identifying leaks is just the beginning. Our services extend to swift and effective repair solutions. We prioritise minimising downtime and optimising operational efficiency while ensuring that repairs adhere to industry standards and regulatory requirements. Our LDAR services are designed to help clients navigate and adhere to relevant regulatory frameworks. This includes keeping abreast of evolving environmental standards and implementing practices that exceed compliance expectations. Recognising that every industrial site is unique, our LDAR services offer tailored monitoring programs. We work closely with clients to develop strategies that align with their specific operational needs, ensuring a proactive approach to emission management. Beyond compliance, we emphasize the broader environmental impact of fugitive emissions. Our services extend to comprehensive assessments, enabling clients to understand the overall ecological footprint and implement measures to enhance sustainability.



Exploration
&
Production

Associated Gas
Production &
Flaring

Gas
Gathering &
Processing

Gas
Transmission
& Storage

Gas
distribution

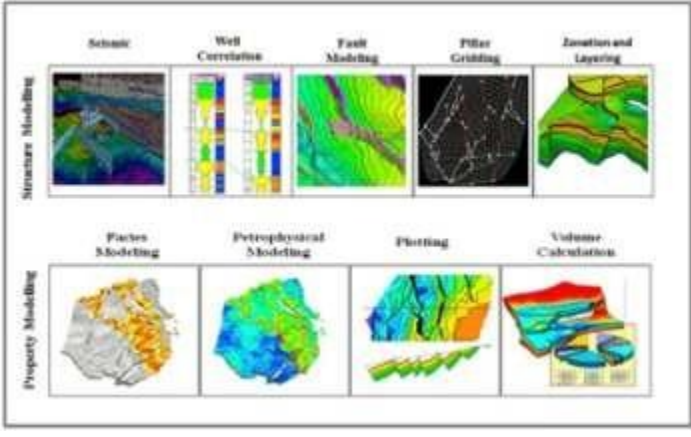
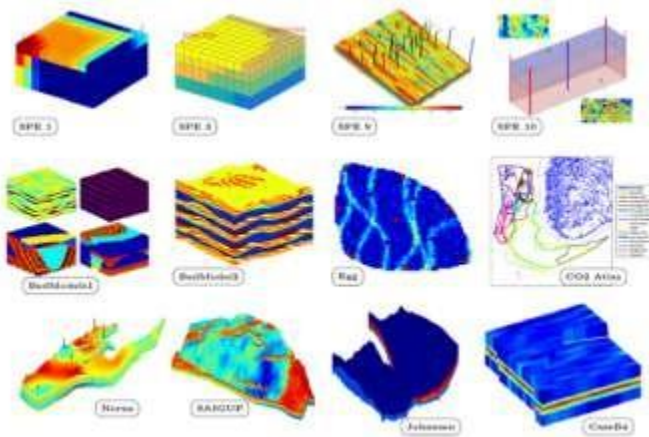


6 GHG Emission measurement /Quantification

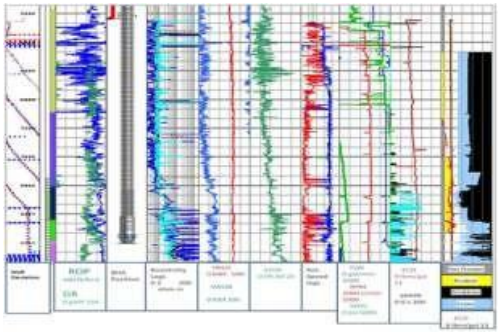
Our GHG Accounting service adopts the most recognized approaches (e.g., CDM and IPCC) to provide a comprehensive GHG emission auditing service. The audit report prepared by our team of experts will identify the GHG emission characteristics of different branches or services of your business, and evaluate potential costs regulatory risks, and emissions reduction opportunities. Our Deliverables include:

- Detailed characterization of Business Areas for proper GHG inventory analysis
- Evaluation of GHG Baseline: Determine standardized methodology to calculate GHG emissions, determine GHG emissions inventory base year to benchmark future emissions, and identify GHG facilities for inventory and operational boundaries.
- A comprehensive report of Corporate-wide GHG Inventory and Review Workshop to highlight tCO_{2e} of all business streams and opportunities for emissions reductions, and key steps and findings.
- Comprehensive GHG emission accounting/Management plan for your facilities and operations.
- Identify fugitive GHG emissions hotspots and reduction/cost-saving opportunities for Carbon neutrality.
- Guide your company to be eligible for carbon credits and green tariffs from emissions offset and obtain a Certified Emission Reduction (CER) Certificate for optimal Returns on Investment (RoI).
- Development of Emission Trading Scheme and Environment Social Governance.

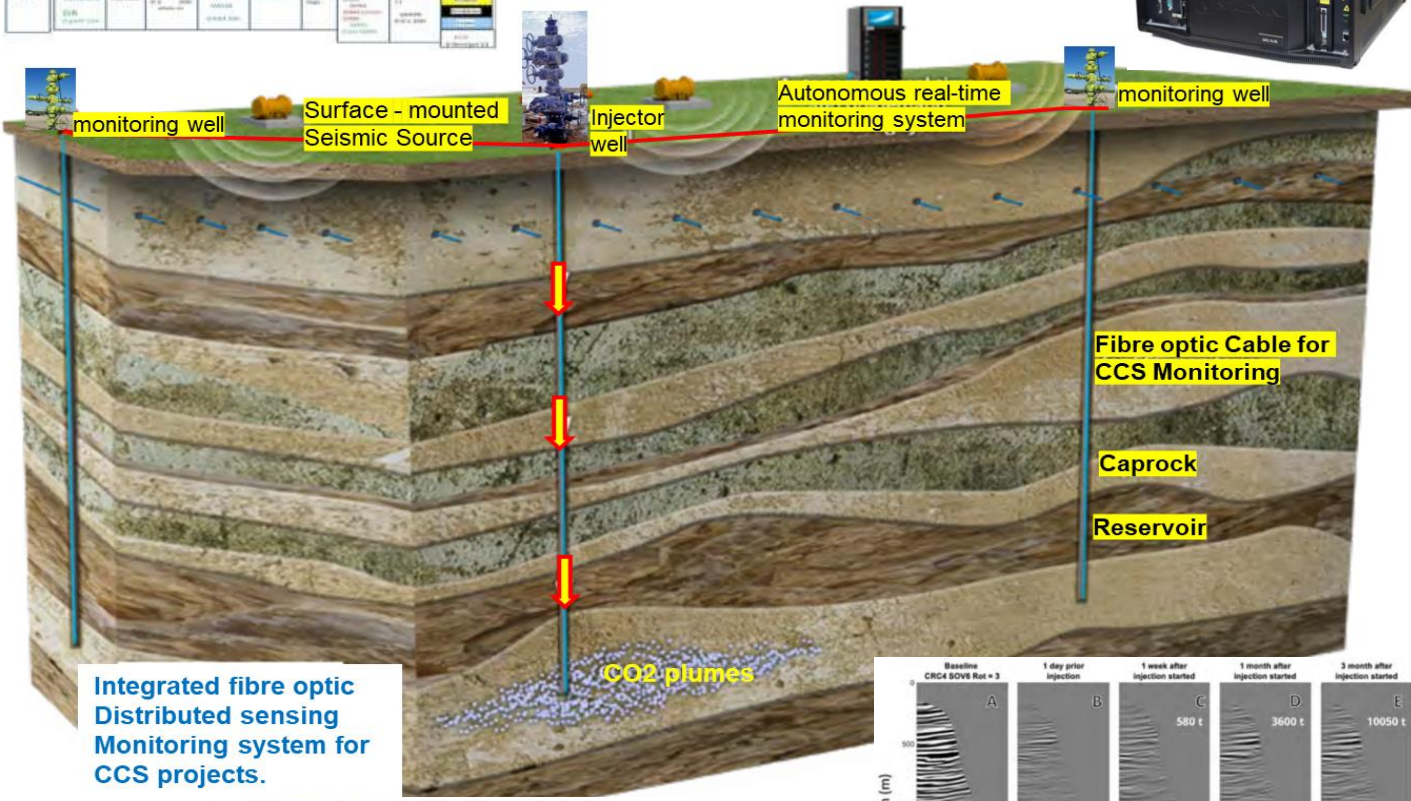




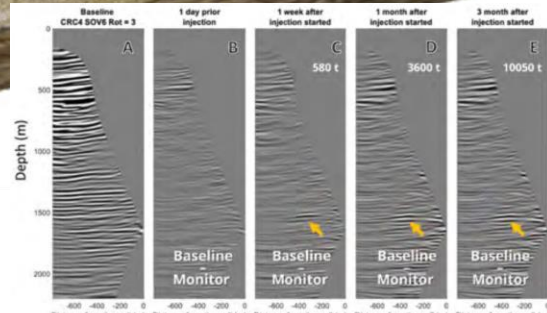
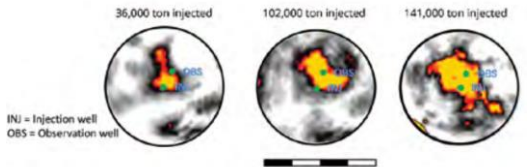
7 G&G Services, Seismic Interpretation, Petrophysical Interpretation, Reservoir Simulation/Surveillance, Subsurface Depleted Aquifer Identification for Carbon Capture and Storage Site and Carbon Plume Injection Monitoring Using DFOS Technology.



- Real-time Monitoring
- Precise Spatial Resolution:
- Early Warning and Safety:
- Data Analysis and Visualization
- Compliance Monitoring



Integrated fibre optic Distributed sensing Monitoring system for CCS projects.





ExxonMobil



Contact

Phone: +2347062206052; +44 7552 124 871; + +44 1224 969807

Aberdeen: St. Annes Court 41 Jute Street, Aberdeen UK

Lagos: Plot 2 Olatunji Moore off T.F Kuboye Oniru Lekki

Email: info@sofsourceinternational.com

Website: www.sofsorceinternational.com